



## City of Lighthouse Point

### September 2024 Newsletter

City Offices will be **closed on Monday, September 2<sup>nd</sup>** in observance of Labor Day.

---

#### Budget Meetings

**Wednesday, September 4<sup>th</sup> at 6:30 PM**

- 1st Budget Public Hearing
- 1st Millage Rate Public Hearing

**Thursday, September 12<sup>th</sup> at 6:30 PM**

- Fire Protection Special Assessment Public Hearing
- Stormwater Utility Special Assessment Public Hearing
- Residential Solid Waste Special Assessment Public Hearing

**Wednesday, September 18<sup>th</sup> at 6:30 PM**

- Final Public Hearing to adopt final Millage Rates



---

#### 2024 Disaster Preparedness Sales Tax Holiday

# DISASTER PREPAREDNESS SALES TAX HOLIDAY

**AUGUST 24 - SEPTEMBER 6**


*Purchase qualifying disaster preparedness supplies tax-free*

Find a full list of tax-free items at [FloridaRevenue.com/DisasterPrep](https://FloridaRevenue.com/DisasterPrep)  
and a complete disaster supply kit checklist at [FloridaDisaster.org/Kit](https://FloridaDisaster.org/Kit)



## DISASTER PREPAREDNESS SALES TAX HOLIDAY AUGUST 24 - SEPTEMBER 6

*Purchase qualifying disaster preparedness supplies tax-free*

<b>\$10 or less</b> <ul style="list-style-type: none"><li>Cans or pouches of wet pet food</li></ul>	<b>\$25 or less</b> <ul style="list-style-type: none"><li>Cat litter</li></ul>	<b>\$60 or less</b> <ul style="list-style-type: none"><li>Nonelectric food storage coolers</li><li>Portable power banks</li></ul>	<b>\$3,000 or less</b> <ul style="list-style-type: none"><li>Portable generators used to provide light or communications or to preserve food in a power outage (Never use a generator indoors.)</li></ul>
<b>\$15 or less</b> <ul style="list-style-type: none"><li>Manual can openers</li><li>Collapsible or travel-size food and water bowls for pets</li><li>Cat litter pans</li><li>Pet waste disposal bags</li><li>Hamster or rabbit substrate</li></ul>	<b>\$40 or less</b> <ul style="list-style-type: none"><li>Portable self-powered light sources</li><li>Pet Beds</li></ul>	<b>\$70 or less</b> <ul style="list-style-type: none"><li>Smoke detectors or smoke alarms</li><li>Fire extinguishers</li><li>Carbon monoxide detectors</li></ul>	
<b>\$20 or less</b> <ul style="list-style-type: none"><li>Reusable ice</li><li>Leashes, collars and muzzles for pets</li><li>Pet pads</li></ul>	<b>\$50 or less</b> <ul style="list-style-type: none"><li>Portable self-powered radios, two-way radios or weather-band radios</li><li>Gas or diesel fuel tanks</li><li>Batteries, including rechargeable batteries:<ul style="list-style-type: none"><li>AA-cell</li><li>AAA-cell</li><li>C-cell</li><li>D-cell</li><li>6-volt</li><li>9-volt</li></ul></li></ul>	<b>\$100 or less</b> <ul style="list-style-type: none"><li>Tarpaulins or other flexible waterproof sheeting</li><li>Ground anchor systems</li><li>Portable pet kennels</li><li>Over the counter pet medications</li><li>Bags of dry dog or cat food</li></ul>	

Find a full list of tax-free items at [FloridaRevenue.com/DisasterPrep](https://FloridaRevenue.com/DisasterPrep)  
and a complete disaster supply kit checklist at [FloridaDisaster.org/Kit](https://FloridaDisaster.org/Kit)

## Scooter and E-Bike Safety in Lighthouse Point

As you hit the streets of Lighthouse Point on your scooters and e-bikes, it's crucial to remember to share the space responsibly, especially when it comes to pedestrians. Pedestrians always have the right of way on sidewalks and crosswalks. Make sure to yield to them and give them plenty of space to move safely. Keep an eye out for pedestrians at all times, especially when turning corners or entering/exiting driveways. Let's work together to create a safe and enjoyable environment for everyone on our sidewalks through the City. 87

### Consequences of Not Yielding:

Failure to yield to pedestrians can result in fines and penalties. More importantly, it can lead to accidents and injuries. Always prioritize safety and respect the right of way of pedestrians.

### Final Note:

As a scooter or e-bike operator in Florida, it's your responsibility to share the sidewalk safely with pedestrians. By yielding to pedestrians and respecting their right of way, you contribute to creating a safer environment for everyone.

Remember, safety is paramount. Let's make our sidewalks enjoyable and safe for everyone!



### Yielding to Pedestrians: A Scooter and E-Bike Operator's Guide

In the state of Florida, operating a scooter or e-bike on the sidewalk comes with responsibilities, especially when it comes to pedestrians. Understanding and respecting the right of way is crucial for ensuring safety for everyone sharing the sidewalk. Here's what you need to know:



### Yielding Basics:

- 1. Pedestrians Have Priority:** Pedestrians always have the right of way on sidewalks. As a scooter or e-bike operator, it's your responsibility to yield to them at all times.
- 2. Slow Down Near Pedestrians:** When approaching pedestrians, reduce your speed. This gives you more time to react to any unexpected movements and ensures you can stop safely if needed.
- 3. Maintain Safe Distance:** Keep a safe distance from pedestrians to avoid any collisions. Give them plenty of space, especially when passing by.

### Specific Rules in Florida:

- 1. Sidewalk Riding:** In Florida, scooters and e-bikes are allowed on sidewalks. However, even if allowed, you must yield to pedestrians and give them the right of way.
- 2. Crosswalks:** When crossing a crosswalk, whether marked or unmarked, pedestrians have the right of way. Stop your scooter or e-bike and allow them to cross safely.
- 3. Interaction at Intersections:** At intersections, whether on the sidewalk or crossing the street, pedestrians always have the right of way. Be especially cautious and yield to them as necessary.



### Tips for Safe Riding:

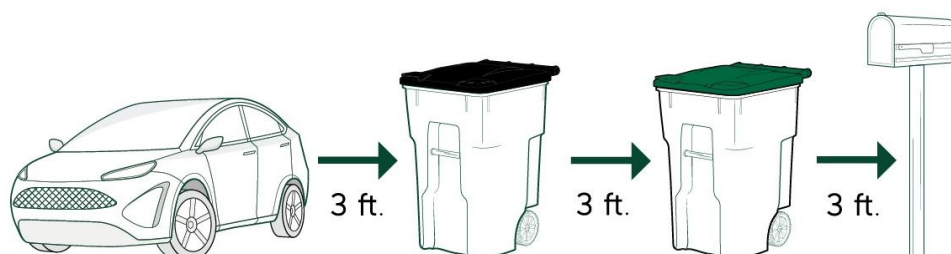
- 1. Stay Alert:** Pay close attention to your surroundings, especially when riding in areas with heavy pedestrian traffic.
- 2. Use Horn or Bell:** Consider equipping your scooter or e-bike with a horn or bell to alert pedestrians of your presence, especially when passing them from behind.
- 3. Communicate Your Intentions:** Use hand signals or verbal cues to communicate with pedestrians when necessary, especially when navigating around them.
- 4. Plan Your Route:** Choose routes that have less pedestrian traffic whenever possible. This reduces the chances of conflicts and allows for smoother riding.



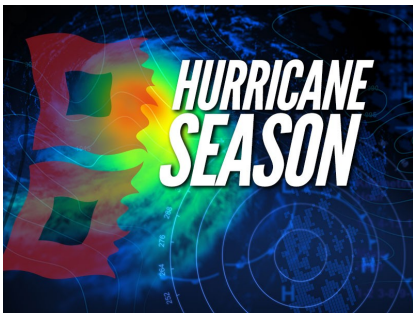
## Solid Waste and Recycling Collection Services

To ensure your solid waste and recycling are serviced, please remember the following:

- All trash must be bagged and placed inside your black garbage cart
- Be sure your cart is placed at the curb with the wheels facing your home
- Do not set your carts within three (3) feet of parked cars, mailboxes, or fencing







## Its Hurricane Season!

**Trim Trees and Shrubbery:** Now is the time to trim trees and shrubbery, and remove coconuts. All vegetation is picked up in the City on a weekly basis. Having your property maintained before a storm will help to ensure that our Public Works

Department will be able to assist all areas of the City during unexpected emergencies. Please remember, per City Code Section 8-23, all contractor-generated trash must be removed by the company generating the contractor-generated trash.

**Bag It - Don't Blow It:** Per City Code Section 11-115, no person shall throw debris of any kind, including lawn clippings or vegetation, into the canal. Both residents and hired landscapers should bag any lawn clippings or vegetation instead of blowing them into the canal.

**Dispose of Trash and Unwanted Household Items:** Now is the time to get rid of unwanted items. In previous years many residents waited until a hurricane was on its way before they emptied out their garages to make room for vehicles, and unfortunately had to bring their unwanted household items and trash back into their garages because there wasn't enough time for trash collection.

**Shelters or Evacuation Plan:** Be sure to form a family hurricane action plan. Lighthouse Point is a mandatory evacuation area with category 3 and above storms. Determine what hurricane plan you and your family will follow should the need arise, how your home will be secured, and where you will stay. The best place to stay is in a home which is outside of the evacuation zone and that has hurricane shutters, food, and supplies.

For more hurricane information, please visit our [website](#).

---

## Let's Recycle Right!



## Let's Get Back To The Basics Of Recycling

Remember these three simple rules each time you recycle:



Recycle clean bottles, cans, paper and cardboard.



Keep food and liquid out of your recycling.



No loose plastic bags and no bagged recyclables.

### Always Recycle



Plastic Bottles & Containers



Glass Bottles & Containers



Food & Beverage Cans



Flattened Cardboard & Paperboard



Paper

### Do Not Include In Your Mixed Recycling Container



NO Food or Liquids



NO Loose Plastic Bags, Bagged Recyclables or Film  
Empty recyclables directly into your bin.



NO Batteries  
Check local drop-off programs for proper disposal



NO Foam Cups & Containers



NO Clothing, Furniture & Carpet



NO Green Waste

**RECYCLE  
RIGHT**

Do you wonder if items you place in your recycling container are allowed? Visit WM's website at: <https://www.wm.com/us/en/recycle-right> to see the list of recyclable and non-recyclable materials. You can also check to see your recycling days. For even more information, watch this quick video from WM:

<https://vimeo.com/74298239>

## Upcoming Events - Save the Date!

### Free Cancer Screening

Saturday, September 14th from 10:00 AM - 1:00 PM

John Trudel Community Center

See [flyer](#) for more details

### Taco Fiesta Kids Cooking Class

Friday, September 20<sup>th</sup> at 6:30 PM



\$30 per chef, ages 10-14

Register at [lhp.recdesk.com](http://lhp.recdesk.com)

**Homegrown: The Zac Brown Experience Band Concert and Food Trucks**

Saturday, October 5th from 6:00 PM - 9:00 PM

Frank McDonough Park

**\*\*In need of sponsors for this event, please see sponsor brochure for [more details](#)\*\***

**Shred - A - Thon**

Saturday, October 12<sup>th</sup> from 9:00 AM - 12:00 PM

Dixon Ahl Hall

**Mayor's Chess Challenge**

Saturday, October 12<sup>th</sup> from 9:00 AM - 11:00 AM

Free event for ages 8+

John Trudel Community Center

Register at [lhp.recdesk.com](http://lhp.recdesk.com)

Refreshments provided by our sponsor, Red Fox Diner

**Free Breast Cancer Mammograms with Boca Raton Region Hospital**

Saturday, November 2<sup>nd</sup> from 9:00 AM - 12:00 PM

Dan Witt Park

See [flyer](#) for more information

To make your appointment go to: [baptisthealth.net/mammovan](http://baptisthealth.net/mammovan)

---

# **TACO FIESTA**

## **KIDS COOKING CLASS**

**20  
SEPT**



**6:30  
PM**



**JOHN TRUDEL  
COMMUNITY CENTER**

4521 NE 22ND AVE. LIGHTHOUSE POINT, FL

————— \$30/CHEF AGES 10-14 —————

**REGISTER AT: [LHP.RECDESK.COM](http://LHP.RECDESK.COM)**

# **MAYOR'S** **CHESS CHALLENGE**



**SATURDAY, OCTOBER 12, 2024**  
**FROM 9-11 AM**

**PLAYERS, AGES 8 AND UP, &  
ALL SKILL LEVELS ARE WELCOME**



**JOHN TRUDEL COMMUNITY CENTER**  
**SPONSORED AND REFRESHMENTS PROVIDED BY RED FOX DINER**  
**REGISTER BY OCTOBER 10TH AT [LHP.RECDESK.COM](http://LHP.RECDESK.COM)**





# CITY OF LIGHTHOUSE POINT SHRED-A-THON

Saturday,  
October 12, 2024

9:00 am - 12:00 pm

Dixon Ahl Hall  
2220 NE 38th Street



## HELP PREVENT IDENTITY THEFT BY SHREDDING THE FOLLOWING:

- Financial statements
- Medical Records
- Receipts/Bills
- Old tax records



NO binder clips, metal hanging folders, CDs or DVDs

Lighthouse Point residents only  
3 boxes per household



Shredding is safe and secure. Documents will be shredded on site! All residents must remain in their vehicles throughout the event. All materials to be dropped off should be placed in the rear cargo area of the vehicle.

### SPONSORED BY:



For more information, call 954-784-3407  
or email: [lhpadmin@lighthousepointfl.gov](mailto:lhpadmin@lighthousepointfl.gov)

## Lighthouse Point Library

Visit our [website](#) or contact us by phone at 954-946-6398.

### September is National Library Card Sign-up Month!

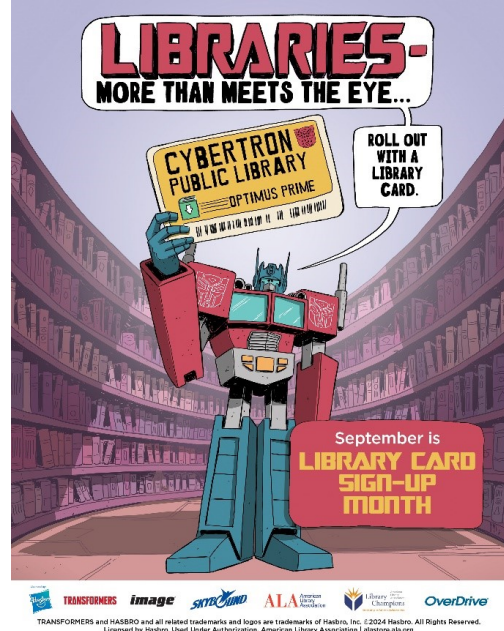
This year's national Library ambassador is Optimus Prime! LHP families are welcome to stop by the Library's youth room to enjoy fun self-paced activities including a pop-up card craft, make a mask, and activity sheets.

September is the perfect month to get a Lighthouse Point Library card! Already have a card? Please tell your Lighthouse Point neighbors about all the wonderful things your hometown library has to offer, including...

**Library Collections!** Checkout a new or favorite print book, audiobook, or DVD. **Library Programing!** This Fall the Library will offer 24 different free programs for youth, teens, adults, families, and LHP Seniors. **Libby eBooks!** Use your Library card to borrow e-books and digital audiobooks for the whole family. **Digital Newspapers and Magazines!**

Access over 4,000 popular publications like the *Wall Street Journal*, *New York Times*, and

*Consumer Reports* at home, in the Library, or anywhere. **The amazing Library staff!** Are here to help residents with everything from research questions, to materials recommendations, to internet access. **Take a look at everything the Library has to offer at [lighthousepointlibrary.com](http://lighthousepointlibrary.com)**



### Quick Reminder for Lighthouse Point Residents Ages 62 and Over

The deadline for the Library's Fall CDBG Programs is right around the corner. **Stop by the Library by 4:00 PM on Friday, September 6<sup>th</sup>** to fill out your forms for the new CDBG year and select your class preferences in the lottery. Proof of Lighthouse Point residency and age is required by the grant. Lottery participants will be notified of their registration status by Friday, September 27<sup>th</sup> and Fall CDBG classes will start the week of October 7<sup>th</sup>. Please check [lighthousepointlibrary.com](http://lighthousepointlibrary.com) for Library's hours. In

honor of Labor Day, all City offices and the Library are closed Saturday, August 31<sup>st</sup> and Monday, September 2<sup>nd</sup>.

**Donate your gently used kids' books and adult paperbacks to the Friends of the Library!** The Friends are currently taking book donations during Library business hours. Donate up to three banker size boxes per resident of the following: Youth or YA books of any age (on any topic, fiction or non-fiction, hardcover or paperback). Adult fiction paperback books of any age. DVDs and



## **Recreation Programs & Registration**



### **Sponsors Needed for Upcoming Events and Sports**

Please view the Recreation Department's brochure for [more information](#).

### **Flag Football for ages 5 -13, and Cheerleading ages 5+**

Registration available starting Monday, September 16<sup>th</sup> at 9 AM online at <https://lhp.recdesk.com>

Season will begin in November. Sign up early to secure your spot!

### **Save the Date-Keeper Days 5k Run/Walk is coming on February 1st, 2025**

New premier sponsorship available this year! Please [see attached](#) letter for all sponsorship opportunities. Registration for runners/walkers will begin October 1st.

### **LHP Tennis Center and FM Tennis offering USTA Junior Development**

8 week program for ages 4+. See [flyer](#) for more details.

### **Riptide Beach Volleyball - Beginner/Intermediate/Club Level**

Riptide Beach Volleyball offers daily training programs for both junior and amateur adult athletes. For more information, [visit our website](#).

### **Colo Colo Soccer Academy - Monthly Training**

This training program is for dedicated young soccer players who want to master the game of soccer. For more info or to register, visit <https://colocolosocceracademyusa.com/>, call 561-386-2254, or email [colocolosoccerusa@gmail.com](mailto:colocolosoccerusa@gmail.com)

### **Showcase Your Handmade Creations at Our Community Events!**

Are you a local artisan or maker? The Recreation Department invites you to reserve a table at our upcoming park events to sell your handmade goods like candles, pottery, knitted scarves, organic soaps, and more. This is a fantastic opportunity to share your creations, connect with neighbors, and support our local community.

If you're interested, please contact the Recreation Department by email: [lhprec@lighthousepointfl.gov](mailto:lhprec@lighthousepointfl.gov)

[John Trudel Community Center](#)



# WEEK 1

## September 2024

### John Trudel Community Center

4521 NE 22nd Avenue Lighthouse Point, FL

For more information, contact the Parks & Recreation Department (954) 784-3439  
Sign up at <https://lhp.recdesk.com/Community/Home>

MONDAY 2	TUESDAY 3	WEDNESDAY 4	THURSDAY 5	FRIDAY 6
Closed for Labor Day	Chair Yoga with Tina 9:00-10:00 a.m. \$10 per person	Yoga with Tina 9:00-10:00 a.m. \$10 per person  Science: Parent & Me (4 week series) 10:15-11 a.m. \$70/res., \$110/non-res.	artNest Little Monsters (4 week series) 4:00-5:00 p.m. \$180/res., \$220/non-res.  Robotics with Bright & Smart (grades 1-3) 5:30-6:30 p.m. \$270/res., \$360/non-res. 9 week series	Yoga with Tina 9:00-10:00 a.m. \$10 per person  Pickleball Clinic 5:00-6:00 p.m. \$10 per person  <u>Saturday 7th</u> Advanced Pickleball Clinic 4:00-5:00 p.m. \$10 per person

# WEEK 2

## September 2024

### John Trudel Community Center

4521 NE 22nd Avenue Lighthouse Point, FL

For more information, contact the Parks & Recreation Department (954) 784-3439  
Sign up at <https://lhp.recdesk.com/Community/Home>

MONDAY 9	TUESDAY 10	WEDNESDAY 11	THURSDAY 12	FRIDAY 13
Yoga with Liz 9:00-10:00 a.m. \$10 per person  Mommy & Me Crawlers (8 week session) 9:45-10:45 a.m. \$160/res., \$240/non-res.  Mommy & Me Newborns (8 week session) 11:00-11:45 a.m. \$120/res., \$200/non-res.  A Matter of Balance (8 week series of classes) 1:00-3:00 p.m. No cost  Pickleball Clinic 5:00-6:00 p.m. \$10 per person	Chair Yoga with Tina 9:00-10:00 a.m. \$10 per person	Yoga with Tina 9:00-10:00 a.m. \$10 per person  Science: Parent & Me (4 week series) 10:15-11 a.m. \$70/res., \$110/non-res.	artNest Little Monsters (4 week series) 4:00-5:00 p.m. \$180/res., \$220/non-res.  Robotics with Bright & Smart (grades 1-3) 5:30-6:30 p.m. \$270/res., \$360/non-res. 9 week series	Yoga with Tina 9:00-10:00 a.m. \$10 per person  Pickleball Clinic 5:00-6:00 p.m. \$10 per person  <u>Saturday 14th</u> Sylvester Cancer Screening 10:00-1:00 p.m. Free event  Advanced Pickleball Clinic 4:00-5:00 p.m. \$10 per person

### John Trudel Community Center

4521 NE 22nd Avenue Lighthouse Point, FL

For more information, contact the Parks & Recreation Department (954) 784-3439  
Sign up at <https://lhp.recdesk.com/Community/Home>

# WEEK 3

## September 2024

MONDAY 16	TUESDAY 17	WEDNESDAY 18	THURSDAY 19	FRIDAY 20
Yoga with Liz 9:00-10:00 a.m. \$10 per person  Mommy & Me Crawlers (8 week session) 9:45-10:45 a.m. \$160/res., \$240/non-res.  Mommy & Me Newborns (8 week session) 11:00-11:45 a.m. \$120/res., \$200/non-res.  A Matter of Balance (8 week series of classes) 1:00-3:00 p.m. No cost  Pickleball Clinic 5:00-6:00 p.m. \$10 per person	Chair Yoga with Tina 9:00-10:00 a.m. \$10 per person	Yoga with Tina 9:00-10:00 a.m. \$10 per person  Science: Parent & Me (4 week series) 10:15-11 a.m. \$70/res., \$110/non-res.	artNest Little Monsters (4 week series) 4:00-5:00 p.m. \$180/res., \$220/non-res.  Robotics with Bright & Smart (grades 1-3) 5:30-6:30 p.m. \$270/res., \$360/non-res. 9 week series	Yoga with Tina 9:00-10:00 a.m. \$10 per person  Taco Teen/Tween Night (ages 10-14) 6:30-8:00 p.m. \$30/chef  Pickleball Clinic 5:00-6:00 p.m. \$10 per person  <u>Saturday 21st</u> Advanced Pickleball Clinic 4:00-5:00 p.m. \$10 per person



## WEEK 4

September 2024

### John Trudel Community Center

4521 NE 22nd Avenue Lighthouse Point, FL

For more information, contact the Parks & Recreation Department (854) 784-5439  
Sign up at <https://lhp.recdesk.com/Community/Home>

MONDAY 23	TUESDAY 24	WEDNESDAY 25	THURSDAY 26	FRIDAY 27
<p>Yoga with Liz 9:00-10:00 a.m. \$10 per person</p> <p>Mommy &amp; Me Crawlers (8 week session) 9:45-10:45 a.m. \$160/res., \$240/non-res.</p> <p>Mommy &amp; Me Newborns (8 week session) 11:00-11:45 a.m. \$120/res., \$200/non-res.</p> <p>A Matter of Balance (8 week series of classes) 1:00-3:00 p.m. No cost</p> <p>Pickleball Clinic 5:00-6:00 p.m. \$10 per person</p>	<p>Chair Yoga with Tina 9:00-10:00 a.m. \$10 per person</p>	<p>Yoga with Tina 9:00-10:00 a.m. \$10 per person</p> <p>Science: Parent &amp; Me (4 week series) 10:15-11 a.m. \$70/res., \$110/non-res.</p>	<p>artNest Little Monsters (4 week series) 4:00-5:00 p.m. \$180/res., \$220/non-res.</p> <p>Robotics with Bright &amp; Smart (grades 1-3) 5:30-6:30 p.m. \$270/res., \$360/non-res. 9 week series</p>	<p>Yoga with Tina 9:00-10:00 a.m. \$10 per person</p> <p>Pickleball Clinic 5:00-6:00 p.m. \$10 per person</p> <p><b>Saturday 28th</b></p> <p>Kids Day Out with Bright and Smart 11:30 a.m.-3:30 p.m. \$50/res., \$60/non-res.</p> <p>Advanced Pickleball Clinic 4:00-5:00 p.m. \$10 per person</p>

## WEEK 5

September/October 2024

### John Trudel Community Center

4521 NE 22nd Avenue Lighthouse Point, FL

For more information, contact the Parks & Recreation Department (854) 784-5439  
Sign up at <https://lhp.recdesk.com/Community/Home>

MONDAY 30	TUESDAY 1	WEDNESDAY 2	THURSDAY 3	FRIDAY 4
<p>Yoga with Liz 9:00-10:00 a.m. \$10 per person</p> <p>Mommy &amp; Me Crawlers (8 week session) 9:45-10:45 a.m. \$160/res., \$240/non-res.</p> <p>Mommy &amp; Me Newborns (8 week session) 11:00-11:45 a.m. \$120/res., \$200/non-res.</p> <p>A Matter of Balance (8 week series of classes) 1:00-3:00 p.m. No cost</p> <p>Pickleball Clinic 5:00-6:00 p.m. \$10 per person</p>	<p>Chair Yoga with Tina 9:00-10:00 a.m. \$10 per person</p>	<p>Yoga with Tina 9:00-10:00 a.m. \$10 per person</p>	<p>Robotics with Bright &amp; Smart (grades 1-3) 5:30-6:30 p.m. \$270/res., \$360/non-res. 9 week series</p>	<p>Yoga with Tina 9:00-10:00 a.m. \$10 per person</p> <p>Pickleball Clinic 5:00-6:00 p.m. \$10 per person</p> <p><b>Saturday 5th</b></p> <p>Advanced Pickleball Clinic 4:00-5:00 p.m. \$10 per person</p> <p>Concert in the Park "Zac Brown Experience" 6:00-9:00 p.m. Free event</p>

## Community Garden-We Want Your Feedback

The City is looking for feedback regarding installing a community garden in the City. This would allow residents or community groups to rent a garden bed for a nominal fee to grow a garden for the season. The City would provide the bed, soil, tools, water source, and other educational classes for those interested. Please email us at [lhprec@lighthousepointfl.gov](mailto:lhprec@lighthousepointfl.gov) to let us know if you are interested. This feedback is not a commitment to rent.



The 12U LHP Mariners were recognized at the August 27th City Commission meeting. Thank you to the players and coaches for their incredible representation in Cooperstown this summer!



A special thank you to Whit's Frozen Custard for hosting our 2nd Annual Chill with a Cop event. The Lighthouse Point Police staff had a great night with our local youth and families! It was a great opportunity to build relationships, share smiles, and enjoy some delicious treats together.







### Lift Station 24D and 24D1 Rehabilitation

This Broward County project will rehabilitate the first two sewer lift stations on NE 39<sup>th</sup> Street east of Lighthouse Drive with modern electrics, pumps and pipes. The project began on Monday, 04/22/24, and may result in intermittent lane closures for materials and equipment deliveries only.

### NE 39<sup>th</sup> Street Paving Project

Paving for this project is substantially complete. Final Punch List items being addressed. Thank you for your patience!

### Lighthouse Drive Paving Project

This project mills and resurfaces Lighthouse Drive from NE 27<sup>th</sup> Street north to the city limits. **Project Update:** Paving is complete. Final Punch List items being



addressed. Thank you again for your patience!

### **8 Bridges Repair Project**

This project performs rehabilitative repairs on eight (8) City bridges to extend their lifespans until future replacement. NE 31<sup>st</sup> Court and NE 22nd Avenue at 44<sup>th</sup> Street bridges are complete. Sample Road, NE 48<sup>th</sup> Street and NE 49<sup>th</sup> Street are substantially complete, and pending inspections. The Sample Road bridge is expected to be completed in September 2024. NE 24<sup>th</sup> Avenue bridge repairs have been completed and site restoration is underway. NE 29<sup>th</sup> Street bridge repairs have begun. Please obey the temporary traffic signals and be safe

### **Canal Dredging**

A contractor has been selected to perform the two tasks in Phase 1. Contract documents and a permit from the Army Corps of engineers have been received. Phase 1 of the dredging project is expected to mobilize in October 2024.

### **Lift Station 224 Generator Installation**

Broward County has completed the generator installation. Landscaping and equipment shading final plans have been reviewed and comments submitted. The proposed fencing and landscaping is in procurement with Broward County.

### **Pompano Reuse Irrigation Project (City of Pompano Beach)**

This City of Pompano Beach project will install a Reuse water system in another section of the City in the Pompano Beach service area south of NE 27<sup>th</sup> Street and west of Lighthouse Drive. The project began staging on Wednesday, 04/24/24, and is estimated to take 14 weeks to complete.

### **FPL Storm Secure Underground Project(s)**

FPL is installing underground electrical infrastructure in the Marina neighborhood and an area straddling Lighthouse Drive from NE 24<sup>th</sup> Street north to NE 27<sup>th</sup> court. The project is ongoing with conduit, wiring and transformer installations.

---

## **Golf Carts**

Effective 10/1/2023, House Bill 949 requires that a person operating a golf cart on a public road must:

- If 18 years of age or older, possess a form of government-issued photographic identification; or
- If under 18 years of age, possess a valid learner's driver license (accompanied by a licensed driver 21 or older) or valid driver license.



All golf carts driven on public roads must be street legal. This includes being registered with a license plate, having insurance, and being equipped with the following equipment: head lights, brake lights, tail lamps, turn signals, reflex reflectors, parking brake, rear view mirrors, windshield with a wiper, and a seatbelt for each designated seat.

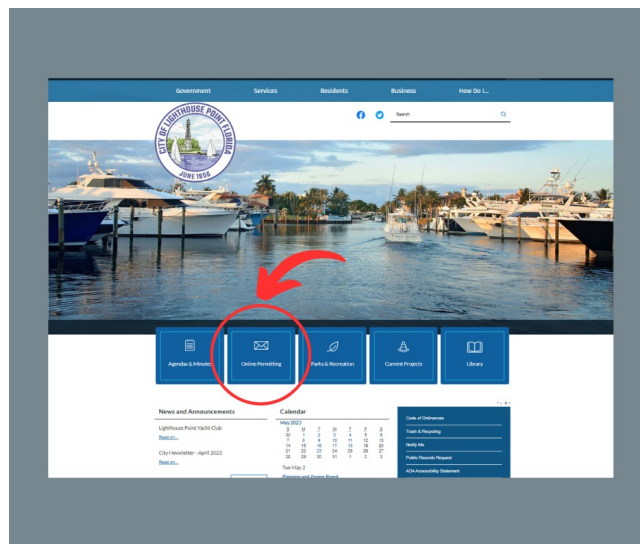
Please do not drive any golf carts on the sidewalks or in the bicycle lanes.

For more information, please review the **Golf Cart FAQs**

---

## Building Department Portal

The Online Permitting Portal has been added to our homepage! You can look up your permit status online with just a simple click.



## Employment with the City

The City has multiple employment opportunities right now. Please visit our [website](#) to view the current openings.

---

## Solicitation Laws

Did you know that the City of Lighthouse Point has Solicitation Laws? Anyone wishing to visit your home to sell goods and merchandise must obtain a permit from the City. Would you like to register your address for the "No Solicitation List"? Visit the City's website: <https://www.lighthousepointfl.gov/.../Soliciting...>

---

## Serve on a City Advisory Board or Committee

Are you interested in becoming more involved in your City? Apply to serve on an advisory board or committee! For more information, please visit [our website](#) (Some boards require certain qualifications. Please contact the City Clerk's office for more details).

---

## Stay Connected by Adding Lighthouse Point on Social Media



City Facebook Page:

[facebook.com/lighthousepointgov](https://facebook.com/lighthousepointgov)

Instagram: [instagram.com/cityoflighthousepointfl](https://instagram.com/cityoflighthousepointfl)

Twitter: <https://twitter.com/cityoflhp>

Nextdoor: [nextdoor.com/agency/city-of-lighthouse-point](https://nextdoor.com/agency/city-of-lighthouse-point)

Recreation Facebook Page: [facebook.com/cityoflighthousepointrec](https://facebook.com/cityoflighthousepointrec)

Police Department Facebook Page: [facebook.com/LighthousePointPolice](https://facebook.com/LighthousePointPolice)

Fire Department Facebook Page: [facebook.com/LHPstation22](https://facebook.com/LHPstation22)

Library Facebook Page: [facebook.com/lighthousepointlibrary](https://facebook.com/lighthousepointlibrary)

Nixle Emergency Alerts: Text 33064 to 888777

---

## Upcoming City Meetings

Meeting instructions will be available on the [City website](#) the Friday before the meeting.



### City Commission

Wednesday, September 4, 2024 at 6:30 PM

Thursday, September 12, 2024 at 6:30 PM

Wednesday, September 18, 2024 at 6:30 PM

Tuesday, September 24, 2024 at 6:30 PM

### Code Enforcement Board:

Tuesday, September 17, 2024 at 6:30 PM - **Cancelled**

### Community Appearance Board:

Thursday, September 18, 2024 at 6:30 PM

### Cultural Arts Committee:

Monday, October 7, 2024 at 5:00 PM

**Economic Development Committee:**

Wednesday, September 25, 2024 at 6:30 PM

**Marine Advisory Board:**

Thursday, November 7, 2024 at 6:30 PM

**Planning and Zoning Board:**

Tuesday, September 3, 2024 at 6:30 PM

**Recreation Committee:**

Monday, October 1, 2024 at 7:00 PM

**Special Magistrate:**

Wednesday, September 4, 2024 at 9:00 AM

**Tennis Advisory Committee:**

Monday, October 14, 2024 at 6:30 PM

All City meetings are held in Fletcher Hall, located at City Hall, 2200 NE 38<sup>th</sup> Street, Lighthouse Point, FL 33064, with the exception of the Cultural Arts Committee and Recreation Committee which are at the John Trudel Community Center, located at 4521 NE 22 Avenue, Lighthouse Point, FL 33064.

---

## September 2024 Calendar

Click [here](#) to view our September 2024 Calendar.



With our interactive calendar you can create an account and subscribe to different groups to receive email notifications for any changes made to City meetings, sport schedules, and more!

---

## Quick Links...

[Our Website](#)

[Upcoming City Meeting Agendas](#)

[City's Code Enforcement Process](#)

[Check the Status of a Permit](#)

[Sports Calendar](#)

City of Lighthouse Point | 2200 N.E. 38th Street | Lighthouse Point, FL 33064 US

[Unsubscribe](#) | [Update Profile](#) | [Constant Contact Data Notice](#)



Try email marketing for free today!